

PRACTICE EXAMS NETWORK SIMULATOR®

JUST RELEASED!

NetSim®11
NETWORK SIMULATOR®

NetSim 11 includes coverage for the
new CCNA v3.0 certification exams.



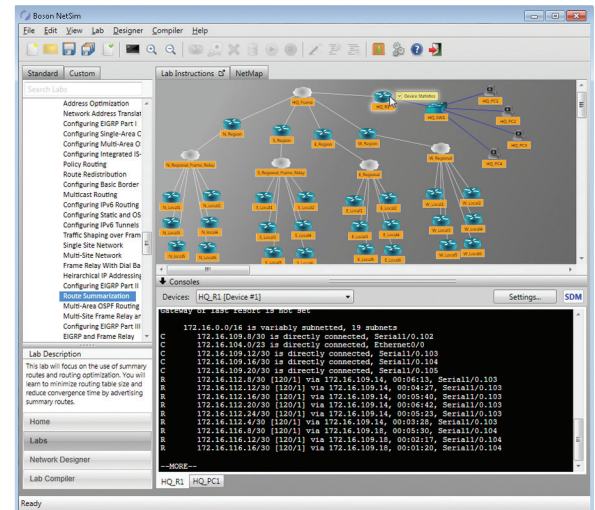


NetSim is a software application that simulates Cisco® Systems' networking hardware and software and is designed to aid you in learning the Cisco IOS® command structure.

NetSim utilizes Boson's proprietary Network Simulator, Router Simulator® and EROUTER® software technologies, along with the Boson Virtual Packet Technology® engine, to create individual packets. These packets are routed and switched through the simulated network, allowing NetSim to build an appropriate virtual routing table and simulate true networking. Boson NetSim is the only simulation product on the market that supports this level of functionality.

Boson offers a NetSim Network Simulator for CCENT®, CCNA® and CCNP®. Each supports the technologies and skills you will need for the respective certification.

NetSim software also includes a comprehensive selection of labs that contain lessons covering routing protocols, Cisco devices, switching, topological design and much more.



NetSim 11 Enhancements:

- Added seven new ICND1 and ICND2 labs
- Added support for filtering all show outputs with output modifiers
- Added support for configuring the Native VLAN
- Added support for Point-to-Point Protocol over Ethernet (PPPoE)
- Added support for Named Standard access control lists (ACLs)
- Added support for IPv6 ACLs
- Added support for Simple Network Management Protocol (SNMP)
- Added support for System Message Logging
- Added support for Secure Shell (SSH)

NetSim in the Classroom

NetSim is a great supplement to actual hardware, removing the need for 24/7 student rack access, and it can serve as a full, portable substitute for hardware at the CCENT and CCNA levels. The portability of NetSim allows learners to access the simulated networks and accompanying labs from anywhere a laptop can go, enabling NetSim to be **used outside the classroom** for homework assignments and additional studying.

CCENT/CCNA UPDATES

NetSim 11 for CCNA includes coverage for the new CCNA v3.0 certification exams.

New NetSim 11 for ICND1 and ICND2 Labs

- Configuring a PPPoE Client
- Configuring IPv6 ACLs
- Configuring Network Device Management
- Configuring SSH

NetSim can be incorporated into nearly any learning method. Users in classroom-based, remote and online learning environments can leverage the functionality of NetSim to **provide the hands-on experience** required to successfully become certified in Cisco networking.

Mentored Learning | Instructor-Led Learning | Self-Paced Learning

NetSim Product Comparison

This is a partial list. Please visit [Boson.com](https://www.boson.com) for more information.

Feature	NetSim for CCENT	NetSim for CCNA	NetSim for CCNP
Device Types	53*	53*	53
Labs with Grading - Total (CCENT/CCNA/CCNP)	98 (98/0/0)	167 (98/69/0)	314 (98/69/147)
AAA			✓
ACLs	✓	✓	✓
Basic Network Services (DNS, DHCP, & NTP)	✓	✓	✓
BGP		✓	✓
CHAP, PAP, & PPP		✓	✓
Custom Queuing and Compression			✓
DHCP — DHCPv6 (Stateless, Stateful, & IPv6 SLAAC)			✓
DMVPN			✓
DNS	✓	✓	✓
EIGRP for IPv6, EIGRP Named Mode, Debugging, & Summarization			✓
EIGRP Wildcard Mask		✓	✓
EtherChannel		✓	✓
GLBP, HSRP, & VRRP			✓
IPSec			✓
IPv6 Addressing	✓	✓	✓
Multicasting Configuration			✓
Native VLANs		✓	✓
NAT	✓	✓	✓
NTP	✓	✓	✓
OSPF (Single-Area & Multi-Area)		✓	✓
OSPF Authentication		✓	✓
OSPF Route Summarization			✓
OSPF Stub & Totally Stubby Areas			✓
OSPFv3 Using IPv6 Addresses		✓	✓
Point-to-Point/Point-to-Multipoint Serial		✓	✓
Policy Routing			✓
PortFast & UplinkFast			✓
PPPoE		✓	✓
PVST+ & STP Configuration		✓	✓
QoS			✓
RIPng for IPv6	✓	✓	✓
Route Redistribution			✓
Site-to-Site VPN Using Preshared Keys			✓
Slot-Based Devices with Ability to Change Modules	✓	✓	✓
SNMP		✓	✓
SSH	✓	✓	✓
StackWise Basics			✓
System Message Logging	✓	✓	✓
Troubleshooting Network Layer Problems	✓	✓	✓
Troubleshooting Physical & Data Link Layer Problems			✓
Troubleshooting Problems at All Logical Layers		✓	✓
Troubleshooting Transport & Application Layer Problems		✓	✓
VLAN Access Control Lists			✓
VLANs, VTP, Trunking, & STP		✓	✓
VLSM	✓	✓	✓

* Although all devices can be added to a custom topology, the commands needed to configure some devices are restricted depending on license version.

C C E N T C C N A C C N P



How to Contact Logical Operations

Phone: 1.800.456.4677

Email: customerservice@logicaloperations.com